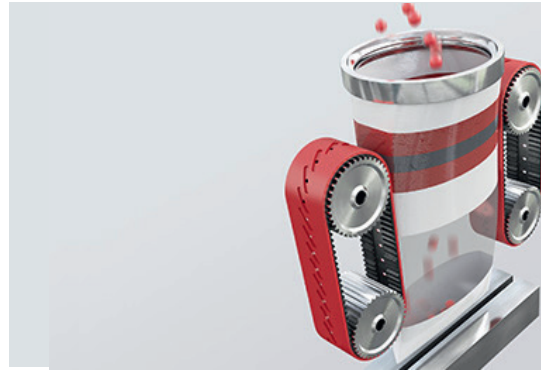
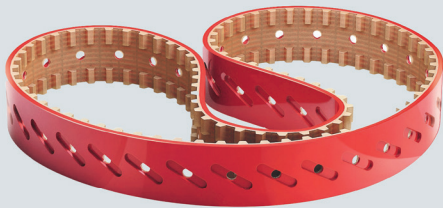


## Vacuum Timing Belt (VFFS) for vertical bag form-fill-seal machines



For many years the Max Schlatterer GmbH & Co. KG has been and still is a reliable partner of well-known OEMs in the packaging industry. Besides these OEMs also a significant number of distributors and end-users worldwide rely on the ESBAND quality and appreciate the possibility to acquire not only current market versions but also tailor made solutions in accordance with customer-requirements from the same supplier.

### Advantages

- High-quality / high-end materials, absolutely endless – without seam or junction
- Coatings of polyurethane, silicone or natural rubber - a combination of coatings is also possible
- Individual surface processing according to your requirements is possible
- Small quantities are feasible

### Areas of application

- Vertical bag form-fill-seal-machines
- Vacuum applications with similar function

### Sector

Packaging

### Your Esband contact

Max Schlatterer GmbH & Co. KG

Robert-Bosch-Str. 9  
89542 Herbrechtingen

Tel. +49 7324 15-0  
[info@esband.de](mailto:info@esband.de)

# Questionnaire VFFS Belts

The more we know about your requirements, the more precise our solution will be! Please send the completed questionnaire to **info@esband.de**.



## Your contact data / contact partner

Name: \_\_\_\_\_

Phone: \_\_\_\_\_

Company: \_\_\_\_\_

Mobile: \_\_\_\_\_

Address: \_\_\_\_\_

E-Mail: \_\_\_\_\_

## Do you already have experience with VFFS timing belts from Esband?

No, please contact us

Yes, we were in contact with your company on \_\_\_\_\_

## Machine data and OEM information:

Manufacturer / Type: \_\_\_\_\_

Manufacturer's part number timing belt: \_\_\_\_\_

## Your requirements regarding VFFS timing belts:

| Profile | Type  | Thickness in mm | Pitch in mm | Pitch in inches |
|---------|-------|-----------------|-------------|-----------------|
|         | T2,5  | 1,3             | 2,5         |                 |
|         | T5    | 2,2             | 5,0         |                 |
|         | T10   | 4,5             | 10,0        |                 |
|         | T10,5 | 3,9             | 10,5        |                 |
|         | T20   | 8,0             | 20,0        |                 |
|         | AT3   | 1,9             | 3,0         |                 |
|         | AT5   | 2,7             | 5,0         |                 |
|         | AT10  | 4,5             | 10,0        |                 |
|         | AT20  | 8,0             | 20,0        |                 |
|         | MXL   | 1,14            | 2,032       | 0,08            |
|         | XL    | 2,54            | 5,080       | 1/5             |
|         | L     | 3,55            | 9,525       | 3/8             |
|         | H     | 4,18            | 12,700      | 1/2             |
|         | XH    | 11,07           | 22,225      | 7/8             |

Other profiles on request!

other profile: \_\_\_\_\_

length: \_\_\_\_\_ width: \_\_\_\_\_

total thickness: \_\_\_\_\_ mm

coating:  NR (natural rubber)  PU  SI 50

## Your requirements regarding the application:

Type of packaging material: \_\_\_\_\_

Product to be packaged: \_\_\_\_\_

abrasion resistance:  low

coefficient of friction:  low

high

miscellaneous:  FDA

use of water

Frequency of belt changes to date: \_\_\_\_\_

## Processing

